

TECHXAGON  
SBM DIGITAL TRANSFORMATION HUB

**SBM** | TECHXAGON  
SAUDI BUSINESS MACHINES | SBM DIGITAL TRANSFORMATION HUB

WHERE **LEADERS**  
**CREATE VALUE** FOR  
A **DIGITAL WORLD**

— Techxagon - SBM Digital Transformation Hub

# A Hive Mind for IT Innovation

SBM's Techxagon Digital Transformation Hub is a brand new, state of the art facility showcasing the most advanced and emerging enterprise technologies.

Located at SBM building in Riyadh city, Saudi Arabia, the Hub comprises **6 dedicated spaces for leaders** to create value.

Techxagon's name is derived from the hexagonal shape of a bee hive. It reflects a collaborative model of working in which every individual plays a key role in ensuring the whole team's success.



## The Concept Behind The Innovative Hub

TECHXAGON is a name combined from the words 'Technology' and 'Hexagon', pronounced similarly to 'hexagon'

The Hexagon shape represents the cells of bee hives, where bees are the architects of the day's work and always present their best - similarly to our SBMers, who use their industry-leading knowledge in technology, and innovation to transform our clients' businesses.



We have used the Hexagon shape in all our patterns and, graphical designs, as well as the letter E to represent, the Honey Stir as a hive metaphor.



### Blue Color:

Calming, confidence, dignity, loyalty, trustworthy. Blue is popular in tech companies for its authoritative appeal and ability to evoke power, success and security.



### Orange Color:

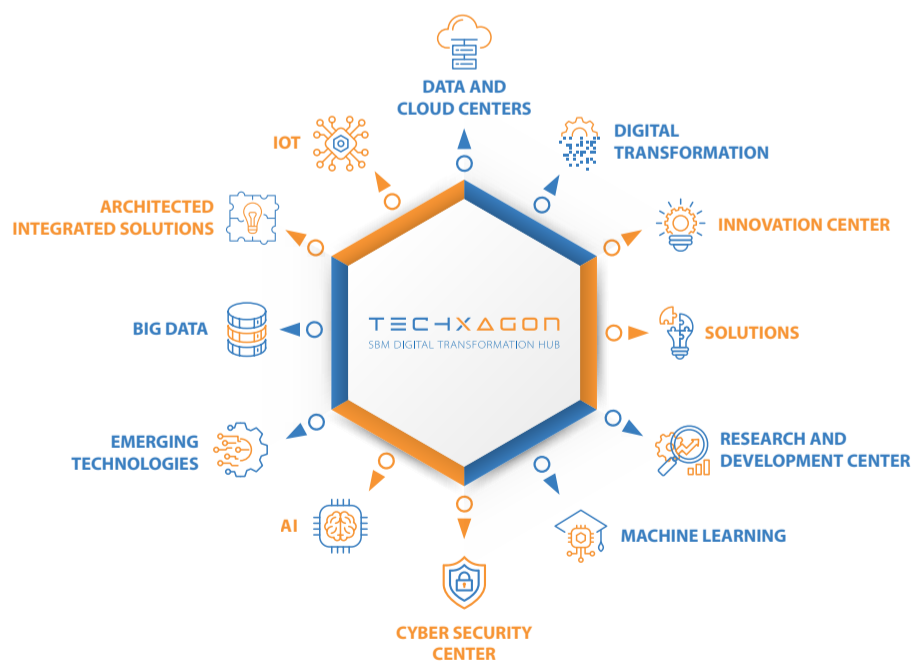
Expresses curiosity, optimism, and energy. And because of this, it is used to renew, attract attention and communicate dynamism and strong positivity.

**TECHXAGON**  
SBM DIGITAL TRANSFORMATION HUB

“Digital transformation is at the heart of everything we do. Techxagon gives C-suite leaders the tools and the technology to create sustained growth.”

*Essam Alshiha, Chief Executive Officer, SBM*

## Powering Tomorrow's Technology



# SBM DATA AND CLOUD CENTERS



## Cell 1: Data and Cloud Centers



**One of the Kingdom's most advanced data & cloud centers.**

- Hot and cold air containment systems APC® by Schneider Electric
- 50 Racks/cabinets in 2 rows in one containment
- 36 SE 42U Rack cabinets
- 6 SE UPS, batteries and RPP Cabinets
- 8 in-Row Calling units
- Two GulfPower Generators offering ultra-reliable power supply
- Rack Access Control System for 36 cabinets
- End to End Advanced Monitoring system (DCIM)
- End to End Visibility
- End-to-End cloud platform
- Tier 3 certification by UPTIME
- IBM and Lenovo ThinkSystem Storage Technologies
- Hybrid IT Environments

---

# INNOVATION CENTER



---

## Cell 2: Innovation Center

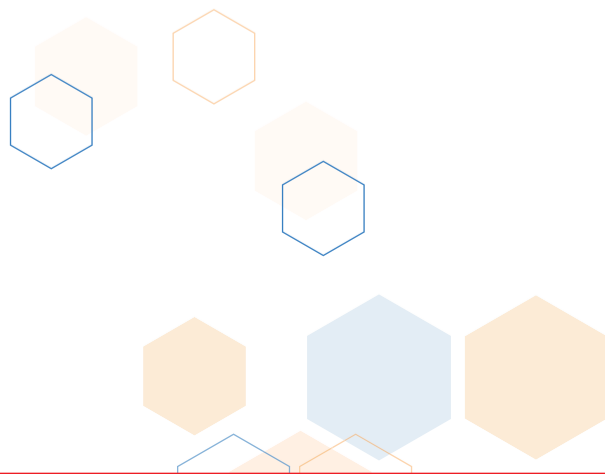
### Inventing the Impossible

In Techxagon's cutting-edge Technology Hub, big things happen.  
Dreams become a reality!

It's where a bold vision for tomorrow's technology comes to life.

We Incubate new ideas and technologies and build the most innovative new products and solutions, to solve complex business problems and accelerate digital transformation.

Offer training and workshops on a range of topics, including artificial intelligence, blockchain, cybersecurity, and the Internet of Things (IoT) for futuristic technologies.



---

# RESEARCH AND DEVELOPMENT CENTER



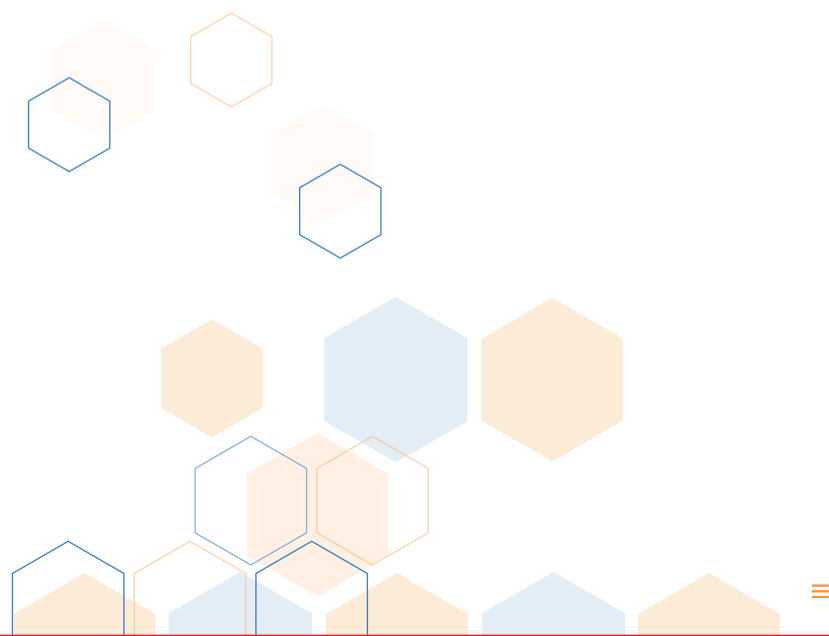
---

## Cell 3: **Research and Development Center**

At our core, we are an incubator for technology innovation. Our focus is on tackling big, urgent, and groundbreaking projects that have a lasting impact on generations to come. Our team is composed of a diverse group of experts, including researchers, scientists, technologists, engineers, designers, and visionaries who are dedicated to inventing the future of computing.

It's a place where the Kingdom's brightest minds - the researchers and the data scientists, engineers, designers and innovators - come together as one.

For our people at Techxagon, though, the innovation center is about more than science.



# CYBER SECURITY CENTER



## Cell 4: **Cyber Security Center**



### **Our customers' first line of defense for cybersecurity threats**

- 2 Separated Security Operations Centers and supported with Network Operations Center operation.
- Total 30 SOC seats with a total of 90 agents
- Advanced HW with 2 Screens for each Agent (total of 68 monitors)
- Around clock monitoring & analysis of events (24\*7\*365)
- Latest Cyber Security monitoring technologies Implemented
- SIEM architecture & use cases
- Log types and logging options
- Ticketing System
- Security controls Integration
- IBM X-Force Threat Intelligence
- Cyber Threat Intelligence | Kaspersky Lab

# SBM EMERGING TECHNOLOGIES



## Cell 5: Emerging Technologies

### Discover the Future with Emerging Technologies

Our emerging technologies can take you there. We're at the forefront of the latest technological innovations, from artificial intelligence, virtual and augmented reality, and robotics to the blockchain.

We're committed to staying ahead of the curve when it comes to technological innovation. That's why we designed our Emerging Technologies Cell and attracted a specialized team dedicated to exploring and implementing the latest emerging technologies to unlock the potential of these game-changing technologies.

Our Emerging technologies are here to transform industries and sectors, from healthcare and finance to manufacturing and transportation, enabling new business models, creating new opportunities for innovation, and driving economic growth.





---

# SBM ARCHITECTED INTEGRATED SOLUTIONS



---

## Cell 6: **Architected Integrated Solutions**


### **Streamline Your Business with Custom Architected Integrated Solutions**

Are you struggling to manage disparate data and systems across your organization?

Our custom-architected integrated solutions help to design and implement a solution that integrates all of your systems and data sources into a streamlined, efficient platform.

Our team specializes in combining hardware and software components, such as databases, applications, networks, and cloud services, to create a unified solution tailored to your unique business needs.

Our architected integrated solutions improve efficiency, reduce costs, and enhance customer experience.



# BUILT FOR ACCESSIBILITY AND EFFICIENCY



## Built for Accessibility and Efficiency

### World-class technology across all cells

- 32 Square meters latest LED screens technology with high resolutions
- Advanced video walling system with total of 42 screens and controlled by the Command Center
- Face Recognition Access Control – 4 levels
- Advance Audio System
- Smart Controls system
- Latest Lighting control system (RGB)
- Smart Glass system for privacy
- Physical Security System
- Full infrastructure including networking



**SBM**  
SAUDI BUSINESS MACHINES

**TECHXAGON**  
SBM DIGITAL TRANSFORMATION HUB

**Visit Techxagon in SBM  
Headquarter – Riyadh**

Digital City, SBM Building (KB05),  
Prince Turki bin Abdulaziz Al-Awwal  
Road - Al-Nakhil - Riyadh 11421